



Zero Waste Kumta Project





ZERO WASTE

What is zero waste

Reducing towards eliminating the waste sent to landfill by

- reducing
- reusing
- segregating at source
- recycling
- composting or turning into biogas.

How to achieve Zero Waste

Waste segregation is the first and crucial step:

- Wet waste is composted or produce biogas
- Dry waste is to be recycled
- Only final rejects & hazardous wastes go to landfill

Two bins

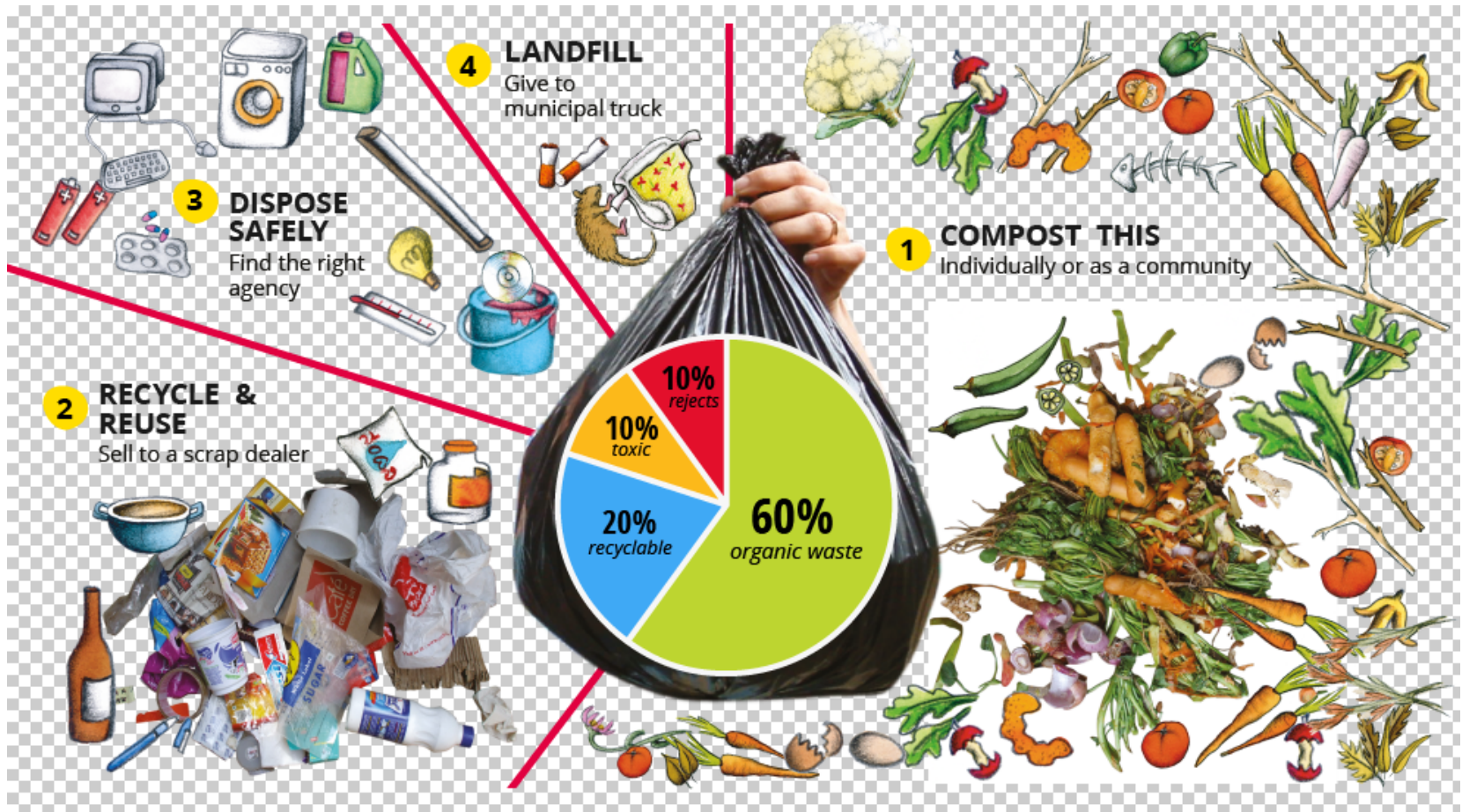
SUPPORT WASTE MANAGEMENT - SEGREGATE



ವಯವಿಚ್ಛು ಒಣ ಪತ್ರ ಪಸಿ ಆವ್ಯಾಜ್ಯವನ್ನು
ಬೆಲಕಡಿಸಿ ವಿಲೇವಾಲಿ ಸೂಚಿ

Only separating our wastes,
everywhere and at all times,
the wheels will be set to
motion

We don't call this waste



Waste Audit - Kumta

Each house produces 3 Kg/day of waste

Total waste from 6,000 houses = 18,000 Kg/day.

Segregation and recycle can reduce the burden on landfill to only 10% of total waste (1,800 kg).

Waste channelising



Only 1,800 kg (2 trucks) of waste goes to landfill.

Not clear

The 10% of toxic waste is to be disposed as per the SWM.

The 20% recyclables are to be given to the rag-pickers

Waste generators must

handle waste with mindfulness, care and training

- reduce by wise consuming choices
- segregate at source
- treat organic waste at home
- give recycles to rag-pickers
- give rejects to Municipality collectors

Result: 60% waste reduction and eco-enterprise start-up

Waste Managers must

- Enforce segregation at source
- Provide collecting and sorting centers
- Provide regulamentar landfill
- Dispose only rejects and toxic wastes
- Enforce composting and bio-methanation
- Include rag-pickers, recyclers & producers in the SWM chain

Stakeholders must here we could make a slide for each

- Set a system to closely monitor the SWPM activities of Municipality
- Allot land & facilities for storing the collected segregated items and their sorting
- Assign land for eventual recycling plants for dry waste & biogas or composting plants for wet waste
- Help KMC to identify key options and their financial support
- Trigger coordination with surrounding GP & MC for collecting & recycling centres
- Call for a volunteer brigade with schools, youth groups, NGOs & community based organizations to jointly monitor the project